



To achieve the books shelves on the floor, the space is lined with sepia-toned full size photograph of books printed on custom tiles.

Opposite To achieve the books shelves on the floor, the space is lined.

# MIURA BY LABOR13

It's like space on Earth.

Photos Zdenek Ernest, Tomas Soucek,  
Ondřej Straka and Martin Vomastek

Where Celadna, Czech Republic  
Opening July 2011  
Client Miura Hotel  
Designer LABOR13 → p.090  
Floor space 4774 m<sup>2</sup>  
Capacity 44 rooms



To achieve the books shelves on the floor, the space is lined.





To achieve the books shelves on the floor, the space is lined.



To achieve the books shelves on the floor, the space is lined.

## EXCEPTIONAL "CUBEOPLE" SCULPTURES SIT UPON THE ROOF

Located on a flat plain surrounded by the foothills of the Beskydy Mountains in the Czech Republic, the Miura hotel opened its doors to the public in the summer of 2011. The team behind the whole concept is LABOR13, an architecture studio from Prague.

The Miura Hotel is not just a building: it is a sophisticated blend of architecture, design and art, with a clear concept and expression. The building looks like a spaceship from another world that has brought a family of five sculptured 'Cubeople' to Earth. Rather than create a barrier in the landscape, the hotel's dynamic spaceship shape is designed to preserve views through the site by raising the structure on piles, leaving the

landscape relatively untouched. The main material used is concrete, combined with rusting Corten steel sheets and purple glass on the outside. Inside, the concrete alternates with wood, stainless steel sheets, glass and Corian.

The building is divided into three parts, one of which seemingly levitates above the ground. The hotel rooms are located in the two side wings of the hotel and all face the south and the golf course, which is part of the hotel. Some have balconies and an incredible view of the surrounding mountains. In the geometric centre of the building is the functional centre of the hotel, with the main entrance, lobby and restaurant. These spaces are smoothly connected by a

concrete ramp. The restaurant is located on the second floor and glass walls offer panoramic views on the surrounding hills. Two conference rooms and the hotel's pride and joy - the Miura spa - are found in the basement. The colour scheme throughout the hotel is minimalistic, with shades of grey, black and white with some splashes of fuchsia.

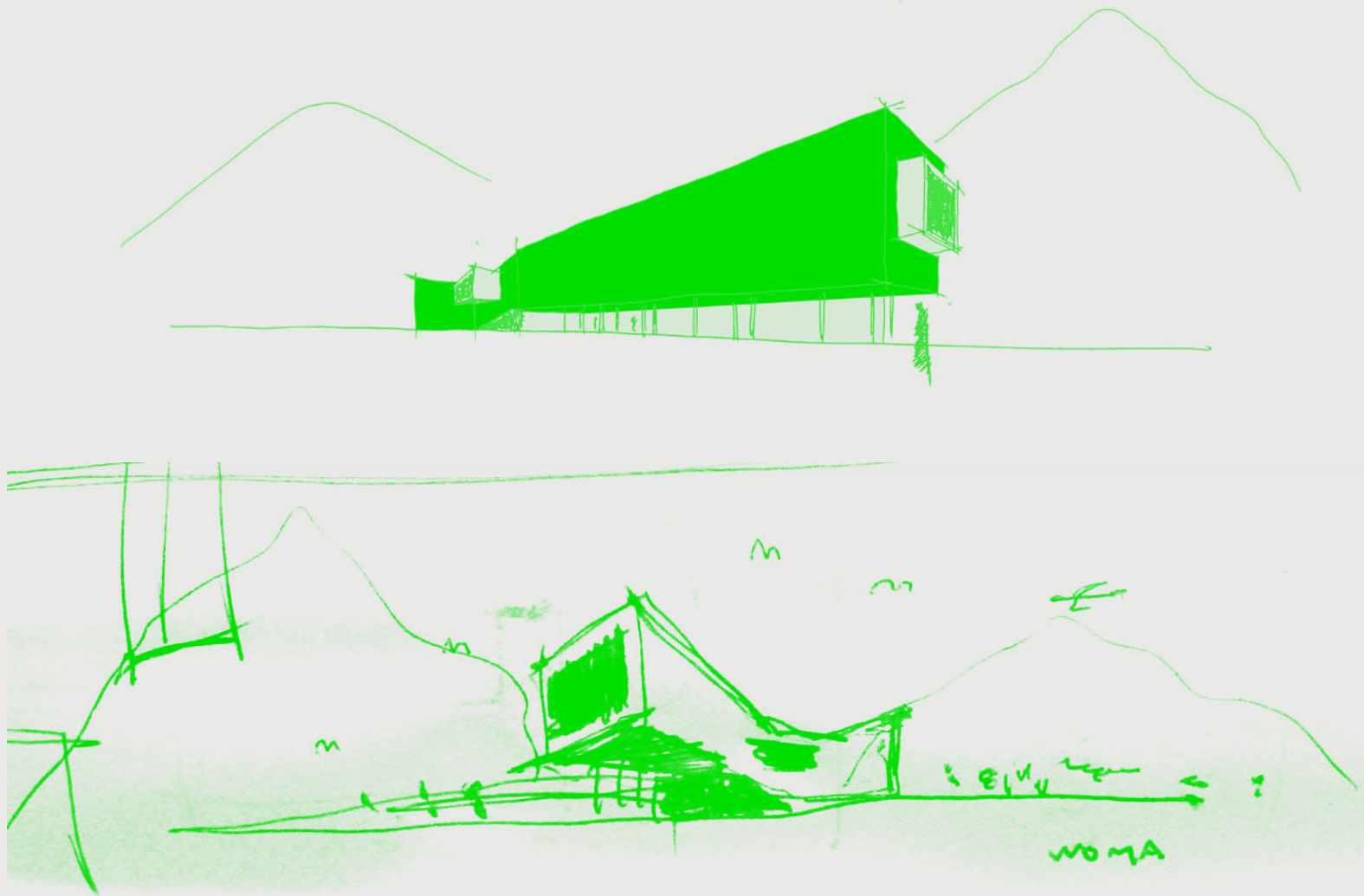
The entire hotel is literally riddled with art. As you walk through or past the hotel you come across art in places you perhaps would not even expect it, like Czech sculptor David Černý's exceptional 'Cubeople' sculptures sitting on the roof or leaning against the outside wall. ●

To achieve the books shelves on the floor, the space is lined.



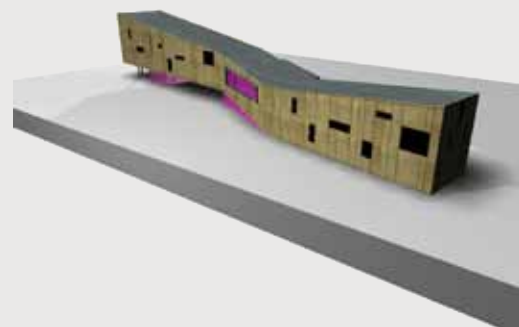
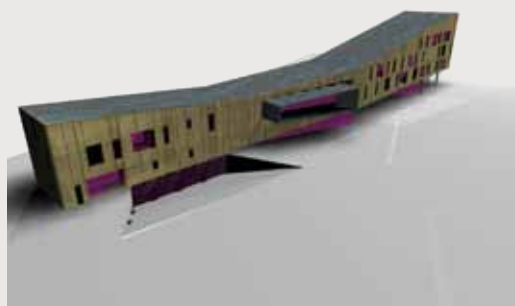
To achieve the books shelves on the floor, the space is lined.



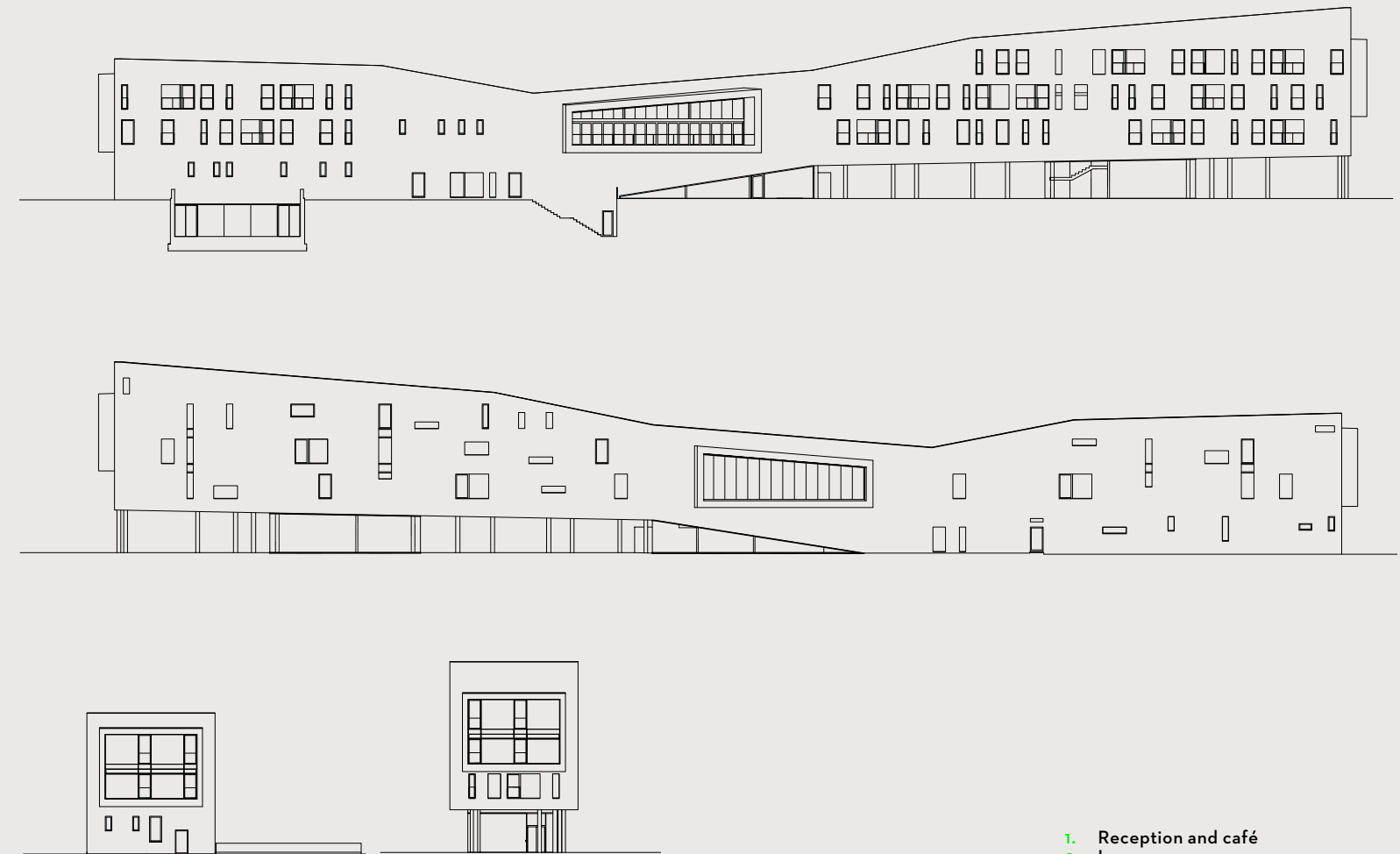


To achieve the books shelves on the floor, the space is lined.

THE DYNAMIC SPACESHIP  
SHAPE OF THE HOTEL  
IS DESIGNED NOT TO  
CREATE A BARRIER IN THE  
LANDSCAPE

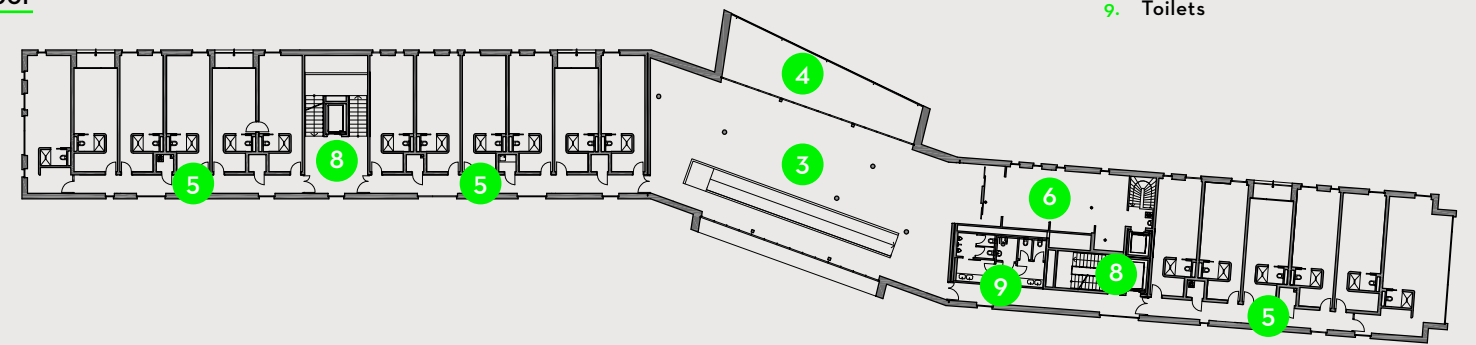


### Elevations



- 1. Reception and café
- 2. Lounge
- 3. Restaurant
- 4. Terrace
- 5. Rooms
- 6. Kitchen
- 7. Back of the house
- 8. Lifts
- 9. Toilets

### First floor



### Ground floor

