

独特与永恒的建筑

Unique and timeless architecture

Labo 13 (Martin Vomastek, Albert Pražák, Jiri Bardodej)

"Mura Hotel", Čeladná, Czech Republic
"Mura旅馆", 契拉德纳, 捷克

该项目位于捷克Moravian-Silesian地区契拉德纳Beskydy山中心, 在一个36洞高尔夫球场上, 这里曾经举办了欧洲PGA2011捷克公开巡回锦标赛。

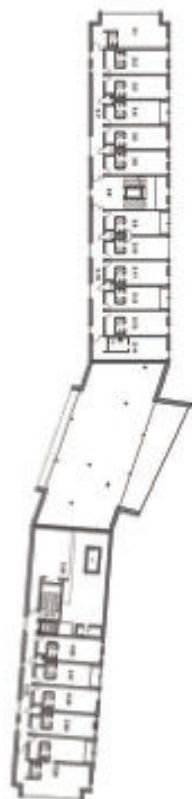
旅馆建筑呈现了一幅未被破坏的美丽景观。

在项目初期, 这个旅馆建筑看起来像一艘来自其他世界的宇宙飞船, 这是由David Černý艺术大师为“立方体人类”设计的家庭住宅。这是一个在建筑、设计、图形和艺术之间具有复杂联系的建筑。其独特的外观与周围的山峰相呼应, 创造了一种清晰的美感。

It is situated in the heart of the Beskydy Mountains in Čeladná of the Moravian-Silesian Region in the Czech Republic, on the site of a 36-hole Golf Course, which hosted the tournament of the European PGA Tour – Czech Open 2011.

The hotel preserves a beautiful unspoilt landscape.

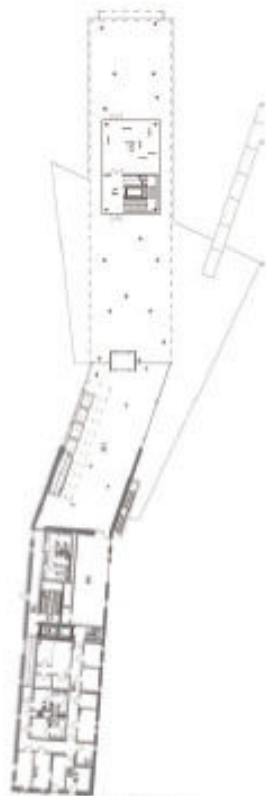
From the beginning, the hotel seemed as a spaceship from another world, which is home to a family of "Cubeman" designed by artist David Černý. It is a sophisticated connection of architecture, design, graphics and art. With its distinctive shapes following the panorama of surrounding hills, it creates a clear dominant aesthetics.



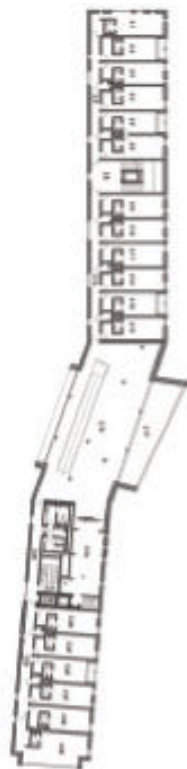
三层平面图 second floor plan



四层平面图 third floor plan



一层平面图 ground floor plan



二层平面图 first floor plan